



THE EPISTLE

Volume 10 Issue 8

St Paul Lutheran Church

August 2011

FROM THE PASTOR'S DESK

Thursday after Pentecost 4—July 14, 2011
A Sower Went Out to Sow... Among Weeds and Rocks

Sisters and Brothers in Christ,

This past Sunday, we heard the parable of the sower from Matthew 13. My sermon touched upon the strangeness of the sower, who doesn't seem to care where the seed is cast. It is extravagant and wasteful to our eyes. Why not focus efforts to where they will receive a higher rate of return. I used the image of a picture I took on a hike, of a tree growing out of a granite boulder. God sows the seed of the gospel in ways that seem foolish. Most importantly God sows the seed of the gospel in the life and death of Jesus. Couldn't a more effective method have been devised? Evidently not... at least not to God. God loves the world so deeply and passionately, that he used the greatest and fullest expression he could find so that we might know that love, even if it causes us to ponder greatly this mystery.

Now having preached this message about God's love for all, after the service I was approached by two people who needed assistance. Well, I had been approached by one of the people, Pete, a local homeless man, before the service, but after a brief conversation I asked him to wait until after so I could attend to the things that needed to be cared for. The other person was a woman, Mary with her young daughter Jasmine. (Note: I have changed their names here.) Two further pictures could not have been painted. Pete looked every part of a person living homeless. Unshaven, dirty pants, poor speech, couldn't sit still. Mary on the other hand sat there with her daughter through the whole service. Brought Jasmine up for the children's sermon, and came forward for Communion. I merely thought she was a visitor. She was but she needed help.

I was thoroughly impressed by the way the congregation responded to both of them. People welcomed and greeted both. They reached out and engaged them in conversation. I had numerous people tell me about these folks who needed help. One of our teenagers had even approached Pete, although she didn't know what to do when he told her to stay away. Nonetheless I was pleased that the reaction from many was one of welcome and hospitality.

I talked with each one in turn. I had to spend a little more time with Mary first, since I knew part of Pete's story already from our brief encounter prior to worship. Mary had come to town from out west about a week before, following a man. When she realized things weren't going to be any better here than they were out there she knew she had to go home, but she lacked resources. Pete was looking to get to North Carolina because his uncle had died. Of course, he had no way to get there.

Pete told me of people he knew in town, one other pastor, Pastor Mike, in particular, and he gave me the name and number of his brother in North Carolina so I could call them. I called them both. I knew the other pastor and I figured I knew who this guy was since Pastor Mike and I had spent a good deal of time talking as we waited for our kids to be dismissed from the same primary school. I was right. Pastor Mike had reached the end of his rope in

dealing with Pete. Pete's family, when I got through to them, wanted nothing to do with him due to drugs, theft and violence. Pete was no saint. And yet here he was... a patch of rocky ground. How would I sow the seed of the gospel there?

Mary seemed more like a plant being choked by weeds and thorns. After telling me her needs, when I was ready to move on helping her, providing her with gas money to get back home, she abruptly blurted out, "How do I find happiness?" If Mary was putting on a con, it was the most convincing con job ever. Never in all of my time here have I had any person who needed help wonder about this. She spoke of her bad decisions, and the way she kept making them. Her unhappiness was compounded by the poor relationship with her pastor since he had excluded her from the sacrament, telling her she was not forgiven for having a child out of wedlock. That she asked about happiness is no surprise. All of her relationships were ruptured and falling apart. Her question might seem like a dream for some pastors, seeing themselves as gurus with the opportunity to impart some gem of wisdom and pull her from despair. It terrified me. I had nothing. Nothing, except of course, Jesus. I replied, "I have no easy solution Mary. The best I can tell you is that happiness has to do with life with Jesus." Upon further reflection, I realize part of my fear. I did not have, and would never have since she was leaving, any long-term relationship where we could discuss and discern where happiness was coming from in her life. Happiness comes from relationship with God and neighbor.

Pete was more difficult. He was demanding and ruffled my feathers. Nevertheless my own words from my own sermon echoed in my ears. It was Sunday and I could not help him get a bus ticket right then. He asked about a hotel room for the night. I told him I could not do both. He wanted a room. Of course the first hotel we stopped at was booked. The second had one. I gave him a gift card for a local restaurant so he could get some food before he was allowed to get into his room. Throughout the night he called the church about a dozen times. At eleven o'clock at night he called me on my cell phone from a nearby drug store where he wanted to get some food. He had the cashier call me to vouch for him, to say I would pay. I did not and I was none too pleased. On Monday the saga with Pete continued and culminated in the police being called to warn him about trespassing and harassment. Very rocky ground indeed.

Yet one thing that I told Mary holds true in both cases. Mary felt terrible that she had to ask for help and wondered how she might be able to pay us back. Pete thought if he did some tiny odd jobs around the church or for parishioners he could earn the help we might provide. I told Mary that it was not necessary for her to repay us. I said, "We help others so that they might have a concrete grasp of the way God loves them." For Mary, this brought her to tears. I don't know if Pete would ever understand. Before Mary left, she gave me a hug as we stood beside the gas pump. Pete left the following day by cursing at us.

Yet as I said in my sermon, we sow the seed of the gospel as an act of faith. We trust that God will not let it come back empty, that our labor will not be in vain. As such it means we must take the long view. When we share the gospel with others, we should not expect grand conversion stories to spring out of them. We plant seeds and it might take a while to germinate... and maybe it never does, but we continue on, sometimes appearing wasteful and foolish using resources on the likes of Pete and Mary. Oftentimes we might think we are being hustled and conned and we should have some sort of guard in place to protect the resources we have. But we share with others not because they look like good investments, but because God loves them no less than he loves us. And our actions help make that love known... hopefully, sooner or later. I pray we all might sow God's love so extravagantly as the sower.

Grace and Peace,

Pastor Brian.

FROM THE SUMMER INTERN

1 Peter 4:8-9 *Above all, love each other deeply, because love covers over a multitude of sins. Offer hospitality to one another without grumbling. 10 Each of you should use whatever gift you have received to serve others, as faithful stewards of God's grace in its various forms.*

How often do we get the opportunity to join a community and become truly and completely integrated almost instantly? When joining an organization, be it a church, civic group, fraternity or something else, we are very rarely if ever brought into the fold right away. In many cases, this is for good reason, but other times it comes out of a simple lack of welcoming hospitality.

It has been my experience in my time here however, that there is NO shortage of hospitality at Saint Paul. I'm sure that the swiftness with which I've been brought into the community here has something to do with my position as summer intern, but I am just as sure that it has as much, if not more to do with you, the people of this congregation.

You have been welcoming in every sense of the world, inviting me to join you for meals both in and out of your homes, you have engaged me in conversation, and through you, and my interaction with you, I've begun to really get a true picture of the role of a parish pastor in a community like Morgantown.

Leviticus 19:34 tells us "you shall treat the stranger who sojourns with you as a native among you, and you shall love him as yourself, for once you too were strangers..." A month and a half ago, I was a stranger, having been to Saint Paul only a handful of times in my time at WVU, but you welcomed me in. I truly believe that hospitality is a big part of the identity of this congregation, and it is something that I am grateful for and I know Pastor Brian is as well. So please, keep up the good work (God's work...) and continue to be welcoming and inviting.

And while we're on the subject of inviting, I would like to extend two invitations to you. First, I would like to invite you to your own church: on Sunday July 31st, I will get my first opportunity to preach a sermon; I've been working on it for over a month now, and I would love to share this day with you. Second, if you enjoy reading internet blogs, you might be interested to know that I have been writing one about my time here at Saint Paul and my journey towards the ministry. I would like to *invite* you to read some of my posts at www.LutheranJono.wordpress.com.

Peace,
Jono



COME SING WITH US!!!

Now is a perfect time to join the choir. Summer break will end with our first rehearsal August 31st. Rehearsals run from 7-8 PM Wednesdays in the balcony. A warm welcome is guaranteed! Call Beth at 304-284-8615 if you have any questions.

On Thursday, August 4, 2011, 7 p.m. St. Paul Lutheran Church begins a new educational offering that we like to call



Ok... there is no name as of yet, but with the end of the Tuesday evening bible study, we are beginning something new. The first Thursday of every month we will be gathering for a night of education that might be like bible study but will not be a pure bible study. We might look at something in the bible, or an aspect of our life and what scripture and Christian tradition might say. We are hoping for a rotation between biblical, thematic and social issues. Every month is meant to be self-contained. If you can't make it one month don't let it worry you about the next one.

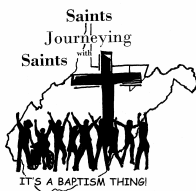
We will have coffee and some sweet treats available. We are also in the process of trying to procure child care. If you are interested in helping with child care, please let Pastor Brian know.

In August our topic will be: ***Finding Christ in the Psalms***, an introduction and exploration of the Psalms.

Please come and join us.

YOUTH GROUP

There will be NO regular meeting in August.

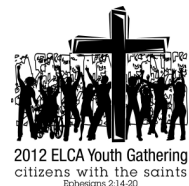


MANDATORY registration meeting for **all youth**
and **parent(s)** –

(youth entering grades 8-11 NOW)

Sunday, Aug. 7, 2011 after worship in fellowship hall

\$150 per participant due at meeting



Please see Debby or Pastor Brian for info or if not able to attend!!



Women of the ELCA - St. Paul Unit

Wednesday – August 10, 2011 7:00 pm in the church fellowship hall



Theme: **REJOICE!**

Theme verse: **Philippians 4:4**

At the July meeting, we were pleased to welcome Jono Adams, our summer Project Connect intern, to join our meeting. Devotions were given on the theme of RESPOND! based on Luke 1: 46-48. During an abbreviated business meeting, the unit voted to host the spring 2012 Monongalia Valley-Mountain Cluster meeting of the West Virginia-Western Maryland Synod Women of the ELCA. We will forward an April 2012 date which does not conflict with the 2012 "Walk to End Alzheimer's" to the cluster coordinator.

Members of the unit cut and packaged 50 sets of donated fabric, tabs and instructions for the LWR School project bags for distribution to church members who will construct the bags. Additional instructions are found in the church narthex for anyone who wishes to use their own fabric to construct bags. All bags and school kit items may be placed in receptacles in the church narthex by Sept. 11th. The St. Paul unit will assemble the school kits at our September meeting.

Include the following items in each School Kit :

Four 70-sheet notebooks of wide- or college-ruled paper approximately 8" X 10½"; **no loose-leaf paper**

One 30-centimeter ruler, or a ruler with centimeters on one side and inches on the other

One pencil sharpener

One blunt scissors (safety scissors with embedded steel blades work well)

Five unsharpened #2 pencils with erasers; secure together with a rubber band

Five ballpoint pens (no gel ink); secure together with a rubber band

One box of 16 or 24 crayons (Crayola brand)

One eraser approximately 2 1/2" long

One sturdy drawstring backpack-style cloth bag approximately 14" X 17" with shoulder straps (no standard backpacks)

Do not add other items or leave out any of the items listed. All items should be new and in good condition. Please do not donate items with any religious symbols, messages or with your congregation's name. Please do not donate any items decorated with a U.S. flag, patriotic or military symbols, or references to the armed forces, including camouflage.

<http://www.lwr.org/beinvolved/schoolkit.asp>

News from Council

The St. Paul Congregational Council met Thursday, July 14th and would like to share the following highlights with you:

Council voted to hire the accounting firm of Toothman Rice for six months to write the congregation's checks. Cost is estimated to be \$1200. At the end of the trial period we will evaluate the advantages and disadvantages.

The Property Committee has been busy. The new floor in the lounge has been installed. The committee intends to use leftover funds from this project to replace the floor in the upstairs bathroom, and would like input on selection of flooring. The holly tree behind the church is getting into the gutters and will be removed. The storage container will be moved to the other side of the parking lot, just behind the church, and painted.

Council received a request from a member to consider becoming an Environmental Justice Covenant Congregation. This was tabled until next month so that council members could gather information. Input from the congregation is welcome.

Anne Hamilton, one of the music teachers who has been using the building during the week, asked to use the church in August for rehearsals and a recital. The rehearsals would be in the lower level of the education wing, August 10-13, and the recital would be Sunday evening, August 14. Council approved the request.

Prayer, Praise, and Thanksgiving

The Prayer List for St. Paul

In The Small Catechism, Martin Luther writes: The Second Commandment: You are not to misuse the name of your God. What is this? Answer: We are to fear and love God, so that we do not curse, swear, practice magic, lie, or deceive using God's name, but instead use that very name in every time of need to call on, pray to, praise, and give thanks to God. Following this command to call on God's name in every situation, we list her intercessions to be lifted up in the midst of our congregation's worship.

Person for whom we intercede:

Marty Ferer
Ann Cloonan
Betty Kelso
Mary Rancier
Joe Shibley
Virginia Harris
Jim Tucker
Jim Craig
Barbara Craig
Bob Snider
Christine Bazelak
Collar Shipley
Caylene Galdfelder
Trish Sasso
Matthew Frownfelter
Tom Jubar
Abram Billig

For what we are praying:

Melanoma
Illness
Surgery
Illness
Heart and lung
Health concerns
Parkinson's
Cancer
Cancer
Myotonic dystrophy
Ovarian cancer
Colon removal/reconstruction
Breast cancer
Cancer
Kidney stent
Kidney cancer
Deployed to Afghanistan

THE GREEN CORNER:**A Ten Member Joint Legislative Select Committee Has Been Formed
To Come Up with regulatory Legislation for Marcellus Shale Drilling**

Five Delegates and five Senators were appointed by the Speaker of the House and the Acting Senate President. Acting Governor Earl Ray Tomblin has told reporters that he would call a Special Session on Marcellus drilling regulations, possibly as early as August 1, provided that the House and Senate can agree on a bill. The Committee and House and Senate leaders must come up with a strong bill that deals with the many challenges of Marcellus shale drilling. Let's help them think this through so they can once and for all protect our health, our water, air and land and our rights. These newly appointed reps need to hear from us. Make no mistake, they will be hearing from industry! Please let them know that strong regulation with more inspectors is what the voters want. Remember, those ten men and women will collectively represent everyone in our state in their endeavors. Let them hear from you in their home districts before they go to Charleston.

Letters to your local newspaper during this week will be important in this effort. If needed, get newspaper names and contact information for your local papers at outreach@marcellus-wv.com.

Listed below are our Delegates:

Tim Manchin, D-Marion, Chair tmanchin@manchin-aloi.com, home 304-363-5613, Capitol 304-340-3166

Barbara Fleischauer D-Monongalia barbaraf@wvhouse.gov, Capitol 304-340-3169

Here are the top needs in a Marcellus bill:

1. Advance public notice of all stages in permitting and drilling
2. Adequate permit fees and bonding amounts
3. Protection of surface owners' property and rights
4. Water withdrawal monitoring and permitting to protect streams and rivers
5. Enhance inspection of casing/cementing as critical for groundwater protection
6. Full protection of all water wells, with adequate setbacks and testing
7. Increased funding for more inspectors to assure safe practices
8. Reform method of certifying and selecting new gas inspectors
9. Removal and proper disposal of drilling pits
10. Disclosure of fracking fluid contents and safety plans for accidents
11. Protected public lands, state parks, wildlife areas, and state forests

For further information contact: Chuck Wyrostok, Sierra Club Outreach Organizer, toll free 877-252-0257, email: outreach@marcellus-wv.com, www.marcellus-wv.com

Dear St. Paul friends,

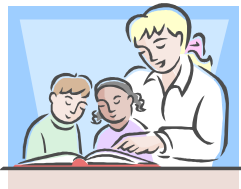
We would like to express our heartfelt thanks and gratitude for your outpouring of concern and generosity following our recent fire. We have been deeply touched by the many acts of kindness, gift cards, donations, and continuous love and support we have received from our St. Paul family. Through this trying time in our lives we have experienced many blessings and have learned that God will never abandon us, but will always see us through. In the midst of our loss, we have witnessed the amazing works of Him everyday.

The construction of our house is progressing daily and we hope to be moving back in by mid-August. In the meantime we will continue to live with David's sister and brother-in-law who have graciously made their home ours. Again, we truly appreciate our St. Paul family and all that you have done for us. We have been so very blessed!

Love in Christ,

David, Candy, Kristen, and Elizabeth Custer

From the Piecemakers: The Piecemakers are still busy making quilts and lap robes. We have been giving some of them to surgery patients this month. Our supplies are still plentiful thanks to everyone's help. We can still use some hands on Fridays. The Tuesday evening sewing class runs into August and we still have openings. The month of July has been a little slow due to the fact that we have had to share our space to accommodate all the other church activities. We have quite a few quilts that need taken to the warehouse in New Windsor, MD. If anyone is going that direction and has traveling time, please let us know. There is a great need for everything we make. The school bags are cut and ready to be sewn, if you can help to get them finished. That is a WELCA project but some of our quilters also belong to WELCA. Thanks again for all of your support and the good Lord for blessing our mission at St. Paul.



RALLY DAY FOR SUNDAY SCHOOL — SEPTEMBER 11TH

If you would like to teach this year, please see Tamara Riegel!!

AUGUST SOCIAL — AUGUST 17TH AT 6:00 PM

Corn & Kielbasa

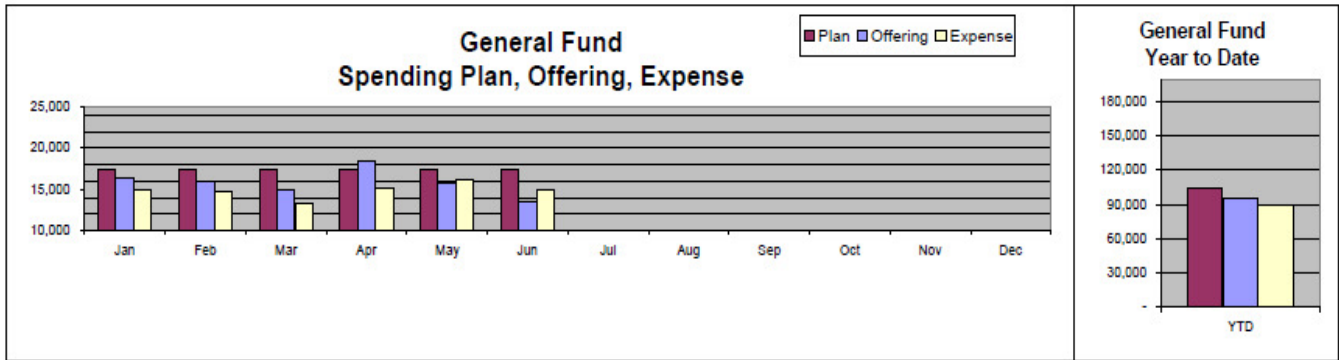
Please join us for a fun evening. Feel to bring any side dishes that would help to fill out the menu. It is a great way to meet and socialize with other members of the congregation!!

Treasurer's Report

June 2011

St Paul Lutheran Church Plan and Expense (General)

	2010 Year												
	End	Jan	Feb	Mar	Apr	May	Jun	Jul	Aug	Sep	Oct	Nov	Dec
General	7,224	8,211	9,862	11,644	14,644	14,505	13,374	-	-	-	-	-	-
Restricted													
Regular	17,578	16,650	17,008	16,692	18,304	17,197	16,942						
Special	4,155	4,485	4,485	5,818	5,818	5,530	5,856						
Standing	38,778	37,512	38,519	39,710	38,747	38,248	36,999						
Use of Church	278	655	705	831	957	1,082	1,307						
	60,789	59,302	60,718	63,051	63,826	62,058	61,104	-	-	-	-	-	-
Bank Balance (Centra)	74,189	67,513	70,580	74,695	78,470	76,562	74,479						
	Plan	17,314	17,314	17,314	17,314	17,314	17,314						
	Offering	16,364	16,066	14,991	18,369	15,739	13,553						
	Expense	14,900	14,782	13,338	15,068	16,175	14,965						



2011 Average Sunday Offering	3,857	2011 Average Sunday Offering	3,857
2011 Projected Average Sunday Offering (Spending Plan)	3,996	2011 Average Weekly Expense	3,432
	(339)		225
June Offering in excess of Expense	(1,412)	General Fund Balance	13,374
YTD Offering in excess of Expense	5,854	Average Offering 2004 - 2010	3,631

ATTENTION MARRIED COUPLES: Have you signed up for your fall Lutheran Marriage Encounter Weekend? The **September 16-18, 2011 Weekend at Olmsted Mansion and Retreat Center in Ludlow PA is nearly full**, so you need to act quickly if you wish to attend that one. There are still openings for the **Nov. 4-6, 2011 Weekend at Park Inn by Radisson-Sharon in West Middlesex, PA**. This is an outstanding facility where all rooms have a king bed and an in-room hot tub, and it is located an hour north of Pittsburgh. These Weekends are a great opportunity to renew and revitalize your marriage whether you are very close or whether you have drifted apart as so many couples do. Couples who have attended overwhelmingly report that the Weekend is the best thing they have ever done for their marriage. Weekends run from Friday at 8 PM to Sunday at 5 PM. There is a \$45 per couple registration fee, plus toward the end of the weekend you will be given an opportunity to make a confidential contribution of whatever amount you wish toward the continuation of the program. Two nights lodging, 5 meals for each of you, and all supplies are included. Register now to avoid being disappointed--simply go to the website: www.GodLovesMarriage.org and sign up, or for questions, or if you would like a brochure with registration form mailed to you, contact Pennsylvania Directors of Lutheran Marriage Encounter, Fred & Julie Schamber, at fjschamber@comcast.net or 724-325-3166.

SERVING ST. PAUL August 2011	LAY ASSISTANTS	LECTORS	ACOLYTE-CRUCIFER	USHERS	NURSERY WORKERS	COUNTERS
7th 10:00 AM	J. Borrelli	S Kirkpatrick	L. Cushing Ethan Stiles	S. Lynch L & L Paulson	Martin Family	S Kirkpatrick L Paulson
14th 10:00 AM	J. Adams	B. Stiles	M. McCulla S. Peters	K. Powell J & S McCulla	L. Cushing Carver Family	K. Powell C. Toffle
21st 10:00 AM	S. Woodruff	F. Riegel	Katie Smith Kyle Smith	G & K Kullman P. Smith Kevin Smith	M. L. Bennett A Grosso	B. Graham T. Riegel
28th 10:00 AM	M. Sampson	S. McEwuen	S. Wertz G. Riegel	LA Hartley S. McEwuen	Gillen Family E. Stiles	S. Gabbert LA Hartley
Sept. 4th 10:00 AM	M. Haas	E. Melby	AJ Bartlett S. Bartlett	E & C Melby T & F Potter	Ford-Werntz Family	S. Leonard L. Springer

ALL WORSHIP ASSISTANTS: If you and/or your family know of dates you will be away from St. Paul - PLEASE - contact Debby Borrelli (304-292-1455 or jleku@comcast.net) with those dates. (Worship schedules are due by the 18th of the previous month; i.e. the Sept. schedule will be finished by Aug. 18th, etc.) Also, the church office always has my contact information.



**Deadline for next
month's newsletter
is the September 18th!!!**

**If you cannot serve, please find your
replacement! Thanks!!**

August 2011

Monthly Planner

Sunday	Monday	Tuesday	Wednesday	Thursday	Friday	Saturday																																																																																																								
	<i>1</i>	<i>2</i> 10:00 AM Bible Study 7:00 PM Quilting Class	<i>3</i> 6:30 PM Baseball Game	<i>4</i> 7:00 PM Under Construction	<i>5</i> 10:00 AM Piecemakers	<i>6</i>																																																																																																								
<i>7</i> 10:00 AM Service	<i>8</i>	<i>9</i> 10:00 AM Bible Study 7:00 PM Quilting Class	<i>10</i> 7:00 PM WELCA	<i>11</i> 7:00 PM Council Meeting	<i>12</i> 10:00 AM Piecemakers	<i>13</i>																																																																																																								
<i>14</i> 10:00 AM Service	<i>15</i>	<i>16</i> 10:00 AM Bible Study 7:00 PM Quilting Class	<i>17</i> 6:00 PM Social	<i>18</i>	<i>19</i> 10:00 AM Piecemakers	<i>20</i> 6:00 PM Congregational Picnic																																																																																																								
<i>21</i> 10:00 AM Service	<i>22</i>	<i>23</i> 10:00 AM Bible Study 7:00 PM Quilting Class	<i>24</i>	<i>25</i>	<i>26</i> 10:00 AM Piecemakers	<i>27</i> Circle of Friends																																																																																																								
<i>28</i> 10:00 AM Service 6:30 PM Mom's Bible Study Circle of Friends	<i>29</i> 8:00 AM LMM (Shoney's)	<i>30</i> 10:00 AM Bible Study 7:00 PM Quilting Class	<i>31</i> 7:00 PM Choir Rehearsal	<table border="1" style="margin: 5px; background-color: #ffffcc;"> <thead> <tr> <th colspan="7" style="text-align: center;">Jul 2011</th> </tr> <tr> <th style="text-align: center;">S</th> <th style="text-align: center;">M</th> <th style="text-align: center;">T</th> <th style="text-align: center;">W</th> <th style="text-align: center;">T</th> <th style="text-align: center;">F</th> <th style="text-align: center;">S</th> </tr> </thead> <tbody> <tr> <td></td> <td></td> <td></td> <td></td> <td></td> <td style="text-align: center;">1</td> <td style="text-align: center;">2</td> </tr> <tr> <td style="text-align: center;">3</td> <td style="text-align: center;">4</td> <td style="text-align: center;">5</td> <td style="text-align: center;">6</td> <td style="text-align: center;">7</td> <td style="text-align: center;">8</td> <td style="text-align: center;">9</td> </tr> <tr> <td style="text-align: center;">10</td> <td style="text-align: center;">11</td> <td style="text-align: center;">12</td> <td style="text-align: center;">13</td> <td style="text-align: center;">14</td> <td style="text-align: center;">15</td> <td style="text-align: center;">16</td> </tr> <tr> <td style="text-align: center;">17</td> <td style="text-align: center;">18</td> <td style="text-align: center;">19</td> <td style="text-align: center;">20</td> <td style="text-align: center;">21</td> <td style="text-align: center;">22</td> <td style="text-align: center;">23</td> </tr> <tr> <td style="text-align: center;">24</td> <td style="text-align: center;">25</td> <td style="text-align: center;">26</td> <td style="text-align: center;">27</td> <td style="text-align: center;">28</td> <td style="text-align: center;">29</td> <td style="text-align: center;">30</td> </tr> <tr> <td style="text-align: center;">31</td> <td></td> <td></td> <td></td> <td></td> <td></td> <td></td> </tr> </tbody> </table> <table border="1" style="margin: 5px; background-color: #ffffcc;"> <thead> <tr> <th colspan="7" style="text-align: center;">Sep 2011</th> </tr> <tr> <th style="text-align: center;">S</th> <th style="text-align: center;">M</th> <th style="text-align: center;">T</th> <th style="text-align: center;">W</th> <th style="text-align: center;">T</th> <th style="text-align: center;">F</th> <th style="text-align: center;">S</th> </tr> </thead> <tbody> <tr> <td></td> <td></td> <td></td> <td></td> <td></td> <td style="text-align: center;">1</td> <td style="text-align: center;">2</td> </tr> <tr> <td style="text-align: center;">3</td> <td style="text-align: center;">4</td> <td style="text-align: center;">5</td> <td style="text-align: center;">6</td> <td style="text-align: center;">7</td> <td style="text-align: center;">8</td> <td style="text-align: center;">9</td> </tr> <tr> <td style="text-align: center;">10</td> <td style="text-align: center;">11</td> <td style="text-align: center;">12</td> <td style="text-align: center;">13</td> <td style="text-align: center;">14</td> <td style="text-align: center;">15</td> <td style="text-align: center;">16</td> </tr> <tr> <td style="text-align: center;">17</td> <td style="text-align: center;">18</td> <td style="text-align: center;">19</td> <td style="text-align: center;">20</td> <td style="text-align: center;">21</td> <td style="text-align: center;">22</td> <td style="text-align: center;">23</td> </tr> <tr> <td style="text-align: center;">24</td> <td style="text-align: center;">25</td> <td style="text-align: center;">26</td> <td style="text-align: center;">27</td> <td style="text-align: center;">28</td> <td style="text-align: center;">29</td> <td style="text-align: center;">30</td> </tr> </tbody> </table>		Jul 2011							S	M	T	W	T	F	S						1	2	3	4	5	6	7	8	9	10	11	12	13	14	15	16	17	18	19	20	21	22	23	24	25	26	27	28	29	30	31							Sep 2011							S	M	T	W	T	F	S						1	2	3	4	5	6	7	8	9	10	11	12	13	14	15	16	17	18	19	20	21	22	23	24	25	26	27	28	29	30
Jul 2011																																																																																																														
S	M	T	W	T	F	S																																																																																																								
					1	2																																																																																																								
3	4	5	6	7	8	9																																																																																																								
10	11	12	13	14	15	16																																																																																																								
17	18	19	20	21	22	23																																																																																																								
24	25	26	27	28	29	30																																																																																																								
31																																																																																																														
Sep 2011																																																																																																														
S	M	T	W	T	F	S																																																																																																								
					1	2																																																																																																								
3	4	5	6	7	8	9																																																																																																								
10	11	12	13	14	15	16																																																																																																								
17	18	19	20	21	22	23																																																																																																								
24	25	26	27	28	29	30																																																																																																								

ST PAUL LUTHERAN
CHURCH

309 Baldwin St
Morgantown WV 26505



The **Epistle** is a publication from:
St. Paul Lutheran Church, Morgantown, WV
Office Hours: Monday-Thursday 9:00–2:00
Friday 9:00–12:00
Telephone: (304)599-0620

Officers Of The Congregation

President: Connie Toffle
Vice President: Larry Springer
Secretary: Tamara Riegel
Treasurer: Dave Stiles
Financial Secretary: Sandy Price

Council Members

Grethe Myles	Larry Springer	Connie Toffle
Connie Toffle	Kevin Gillen	Lee Paulson
Tamara Riegel	Lu Ann Hartley	Misti Bartlett
	Emily Stiles	