



# THE EPISTLE

Volume 8 Issue 10

St Paul Lutheran Church

October 2009

## FROM THE PASTORS DESK

Monday of Pentecost 17

Sep. 28, 2009

*Christ and Culture*

Sisters and Brothers in Christ,

A great discussion has been carried out, not only recently since the ELCA's Churchwide Assembly (mainly that the decisions to change policy is simply a capitulation to the culture surrounding us), but also for millennia now, over how Christians engage culture. Because Christianity sprung out of a particular culture, it is rooted to a particular worldview. Rather than say now that if Jesus is rooted to a particular worldview then he is of no use to us, we look for ways that the good news of Jesus Christ can speak to us still. When Christianity spread throughout the Mediterranean region, the Church ran into serious thinkers. How did the Church engage these philosophical traditions? They engaged, and debated, and sometimes reworked philosophers because it was useful to expound Christian truths. St. Augustine used the framework established by Plato for much of his writings. Thomas Aquinas used Aristotelian metaphysics to discuss how Christ is present in the Eucharist.

While there has been a good amount of engagement with the culture, there are times when the response was more insular. In his work *Christ and Culture*, Richard Niebuhr (not Reinhold, mind you) sets for five ways that the Church has responded to culture.

- **Christ against Culture:** here is the separatist mode of thinking; Christianity and culture are incompatible.
- **Christ of Culture:** Christ is understood to be the highest fulfillment of culture, and therefore there is no need to separate the two
- **Christ above Culture:** Christ and culture are somewhat synthesized; culture cannot be said to be purely bad, since God made the world and rules in it even if nature and culture are fallen
- **Christ and Culture in Paradox:** Christ and culture both claim our allegiances, but they cannot be simply synthesized in any lasting way; the two must be held in tension

**Christ Transforming Culture:** Less focused on the ultimate transformation at the end, here Christ is seen as transforming the world now into a better place to live

All of these have their place, but nowhere can we simply avoid culture. Even the separatist view means we must keep an eye out for the trappings of culture sneaking in, being ever vigilant. For me, I think it is better to engage and discuss what is happening around us. After all, whether we read novels, listen to music, watch television or movies, we open ourselves to the deep longings of the human experience and the stories told to help bring about some sense of order and meaning to this experience. In many cases there will be a resonance with God's story of redemption from sin and brokenness.

A few years ago, I took a class on storytelling down at Fairmont State, where one day as we talked about stories, the professor asked us to recall the four types of conflict we see. Someone much closer to eighth grade English class recalled them much quicker than I could.

1. The human versus God
2. The human versus nature
3. The human versus another human
4. The human versus his or her own self

I gasped as soon as I heard these. For they are the very way we understand the way sin has ruptured relationship in the world. Genesis 3 gives us an image of broken relationships between the human and God, creation, other humans, and his or her own self. It hit me, stories, no matter where they come from, are first foremost about sin and whether there is any redemption or not. No matter how technologically advanced we think we are, we still are a culture that seeks to tell stories. Much of this storytelling, even the sappiest romance or stupidest comedy, is at the heart of our notion of culture. Norms and boundaries are formed through their telling. Sometimes a gift, sometimes a burden, culture affects each and every one of us.

I am convinced that we are all engaged in this examination, but that we are not all that conscious of the fact. So I propose the creation of a book group. For our first selection, I would like to choose something that I have given a mini-review of a few months ago, the book *The Shack*, where William Young seeks to wrestle with notions of God's triune identity as well as the problem of evil. And I am giving us a good number of weeks to acquire, and read the book, meeting then on **Saturday November 21 at 10 a.m.** here at the church for discussion. Those who are interested in continuing can choose other books as they go.

Our engagement with the stories of human experience and longing help us to connect culture with God's tremendous love and desire for us all to be reconciled to him.

Grace and peace,

Pastor Brian

---

Currently our emergency assistance fund, the Santa Lucia fund is nearly depleted. Please consider donating to the fund so we can continue to assist those in need.

---

**On October 19<sup>th</sup>, we are holding a service of Word and Healing at 7 p.m.** Traditionally, St. Luke the Evangelist is known as a physician, so we hold this service in connection with his commemoration. During this service, we will anoint those who seek healing, and we will bless those who are engaged in the ministry of healing. Please invite others who might be interested.



*The Service League of  
Morgantown  
invites all to share the spirit of the  
season at their*

*Annual Holiday Open House  
at*

*The Old Stone House*  
313 Chestnut Street  
Morgantown

Friday, October 30, 10 am -5 pm

Saturday, October 31, 10 am – 5 pm

Sunday, November 1, 12 pm – 4 pm

*Visit our quaint, historic shop for unique holiday gifts  
including WV items and locally handcrafted products.*

*Tea and cookies are served while you shop.*

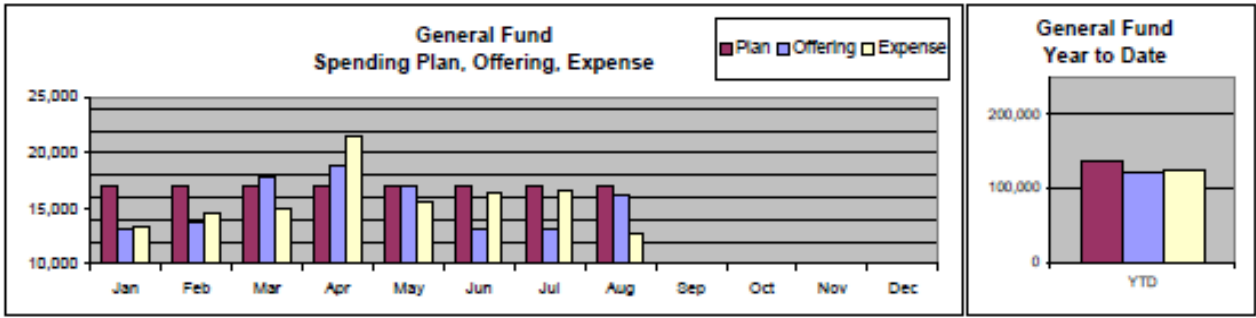
*Proceeds from sales benefit the citizens of  
Monongalia County.*



# Treasurer's Report

## St Paul Lutheran Church Statement of Revenue and Expense with Spending Plan

| August 2009  | August        |               |                         |                       | Year to Date         |                    |                       | Year to Date    |                     |
|--|---------------|---------------|-------------------------|-----------------------|----------------------|--------------------|-----------------------|-----------------|---------------------|
|  | General Fund  | Spending Plan | +/- of Plan Rec'd-Spent | % of Plan Rec'd-Spent | General Fund to Date | Total Plan to Date | % of Plan Rec'd-Spent | Restricted Fund | Total Funds to Date |
| <b>Support and Revenue</b>                         |               |               |                         |                       |                      |                    |                       |                 |                     |
| Contributions                                      | 16,287        | 17,113        | (826)                   | 95%                   | 122,841              | 136,903            | 90%                   | 122,841         | 122,841             |
| Designated/Restricted                              |               |               |                         |                       |                      |                    |                       | 14,372          | 14,372              |
| <b>Total Assets</b>                                | <b>16,287</b> | <b>17,113</b> | <b>(826)</b>            | <b>95%</b>            | <b>122,841</b>       | <b>136,903</b>     | <b>90%</b>            | <b>14,372</b>   | <b>137,213</b>      |
| <b>Expenses</b>                                    |               |               |                         |                       |                      |                    |                       |                 |                     |
| Designated/Restricted                              |               | 0             |                         |                       |                      | 0                  |                       | 25,064          | 25,064              |
| Congregational Council                             |               | 0             |                         |                       | 884                  | 0                  |                       | 0               | 0                   |
| Benevolences                                       | 0             | 2,600         | (2,600)                 | 0%                    | 17,500               | 21,500             | 81%                   | 0               | 17,500              |
| Church Mortgage                                    | 568           | 580           | (12)                    | 0%                    | 4,533                | 4,640              | 98%                   | 0               | 4,533               |
| Committee - Christian Education                    | 442           | 437           | 6                       | 101%                  | 2,259                | 3,250              | 70%                   | 0               | 2,259               |
| Committee - Fellowship                             | 45            | 79            | (34)                    | 57%                   | 629                  | 938                | 67%                   | 0               | 629                 |
| Committee - Staff Support                          | 0             | 0             | 0                       | 0%                    | 0                    | 30                 | 0%                    | 0               | 0                   |
| Committee - Outreach                               | 89            | 146           | (67)                    | 61%                   | 1,012                | 1,727              | 59%                   | 0               | 1,012               |
| Committee - Property                               | 113           | 167           | (64)                    | 68%                   | 453                  | 1,333              | 34%                   | 0               | 453                 |
| Committee - Resource                               | 0             | 0             | 0                       | 0%                    | 0                    | 600                | 0%                    | 0               | 0                   |
| Committee - Stewardship                            | 0             | 0             | 0                       | 0%                    | 0                    | 100                | 0%                    | 0               | 0                   |
| Committee - Worship & Music                        | 429           | 308           | 122                     | 140%                  | 2,042                | 3,200              | 64%                   | 0               | 2,042               |
| Insurance  | 0             | 301           | (301)                   | 0%                    | 3,062                | 2,909              | 105%                  | 0               | 3,062               |
| Building Operation                                 | 1,510         | 1,841         | (332)                   | 82%                   | 15,722               | 15,656             | 100%                  | 0               | 15,722              |
| Office Operation                                   | 405           | 384           | 21                      | 106%                  | 3,433                | 3,071              | 112%                  | 0               | 3,433               |
| Parish Communications                              | 110           | 185           | (76)                    | 59%                   | 1,422                | 1,530              | 93%                   | 0               | 1,422               |
| Payroll  | 9,081         | 9,102         | (21)                    | 100%                  | 72,281               | 72,820             | 99%                   | 0               | 72,281              |
| <b>Total Expenses</b>                              | <b>12,793</b> | <b>16,130</b> | <b>(3,338)</b>          | <b>78%</b>            | <b>126,230</b>       | <b>133,304</b>     | <b>94%</b>            | <b>25,064</b>   | <b>148,411</b>      |
| <b>Excess of Support and Revenue Over Expenses</b> | <b>3,494</b>  | <b>983</b>    | <b>2,511</b>            |                       | <b>(2,389)</b>       | <b>3,600</b>       |                       | <b>(10,692)</b> | <b>(12,198)</b>     |



### SUNDAY SCHOOL NEWS

Sunday School for the 2009-2010 academic year began with Rally Day on September 13th. We will have Sunday School on September 20th and then will not hold Sunday School during the painting project, September 27th through October 4th.

Our service project for the fall is collecting coins in a specially decorated can. The money will be used to purchase animals from the Heifer Project.

Our Christmas program will replace the worship service (the sermon and Communion will still be included) on December 20th. That afternoon the Sunday School will sign at the Golden Living Center.



**FROM THE PIECEMAKERS:** For those of you who did not already hear! We finally took a day off and five of us went to New Windsor, MD, to deliver our quilts and just in the nick of time too, because there were no other quilts in the whole warehouse. We took 60 quilts which weighed 160 pounds, that is over 1 1/2 bales. We were going to show some of our quilters how they handle everything at the warehouse and it was somewhat disappointing because there was not much to see. I guess it was a good thing that Pastor was not able to go with us. Their collections are down 40% this year. It is understandable because it is very costly and time consuming to get the quilts there. We have been blessed to still get quilts tops, chairs and various supplies donated to St. Paul and we have a very dedicated quilting group. Again many thanks to everyone contributing to our mission.

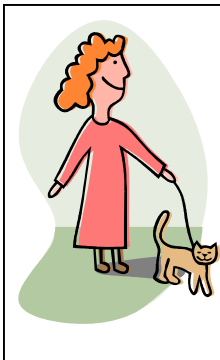
**WELCA NEWS:** The Women of the Church thank all who sewed bags for the school kit mission project. Also thank you to all who filled bags for us. At latest count we have 96 bags to take to New Windsor for Lutheran World Relief. Great Job!!!!

The next meeting of WELCA will be Wednesday, October 14th in the church lounge at 2 p.m. All women are welcome to join in the fellowship and Bible Study.

### NEWS FROM THE CHAPEL:

Reformation Daze 2009 kicks off on Reformation Sunday with an historic worship service at 7:00 PM, on Sunday, October 25, at the Lutheran Campus Chapel. Last year it was the *SBH* liturgy, and the year before that it was the *Washington Service*. We haven't yet decided what it will be this year, but we promise an exploration into the history of the on-going Lutheran Reformation—*Semper Reformanda!*

Other featured events of the octave include "The Wurst Dinner on Campus," a "Brot and Beir," and the annual "Luther Movie Night." Visit the website ([www.LutheranMountaineer.org](http://www.LutheranMountaineer.org)) for details which will be posed about the mid-point of the month.



### BLESSING OF THE ANIMALS

Sunday, October 4th at 4:00 PM

St. Paul Lutheran Church Parking Lot

Bring your animals for this special service and feel free to ask friends to also bring theirs. If you can't bring your pet, please bring a picture for the blessing.

## News from Council

The St. Paul Congregational Council met Thursday, September 10th and would like to share the following highlights with you:

- Members of Council will be calling those members who have not returned their updated personal information forms. They will be asking for current addresses and telephone information, and they will be asking if you wish to receive the newsletter in electronic format (you recall that due to changes in the way the post office will be handling bulk mail, it is no longer feasible for us to mail the newsletter to every household). Blank forms are in the narthex, if you wish to forestall the call! Please also indicate on the form if you are willing to receive the newsletter in electronic format (that is by email).
- Council authorized Larry Springer and David Stiles to investigate investment opportunities and decide on a place to invest our bond money so that it will earn higher interest. Preference will be given to church-associated funds such as Mission Investment and Thrivent.
- Council did not authorize payment of benevolence to the Synod for the month of August because our expenditures exceeded our income. We hope and anticipate that donations will increase in the fall so that we can meet our pledge to the Synod.
- Council approved the paint selections for the sanctuary. Painting and carpeting will begin on September 21st. Beginning September 27th and continuing through the next one or two Sundays (October 4th & October 11th), we will hold services in the Lutheran Chapel at WVU. Be reassured that there will be room for everyone, and we will be doing our best to help you find places to park and make this disruption as small as possible. Please note also that there will be no Sunday School on Sundays when we are at the Chapel.
- The congregational meeting on the spending plan for 2010 will be held November 15th. Committee chairs please submit your proposed budgets to David Stiles as soon as possible.

### **HELP WANTED**

#### **WORSHIP ASSISTANT COORDINATOR POSITION AVAILABLE**

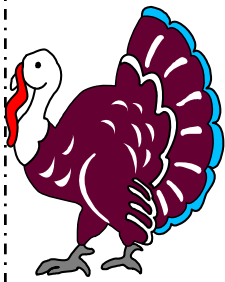
Sally Leonard has been our Worship Assistant Coordinator for the last 3 years and she has decided to hand those duties over to a new volunteer at the end of this year. The Worship Assistant Coordinator makes out the schedule for Lay Worship Assistant, lectors, acolytes, etc. that is printed in the newsletter each month. This volunteer also sends out postcard reminders each week to the people scheduled to serve the coming Sunday. This work takes an average of 30 minutes per week and is done at home. Sally says that it helps to be an organized person and that she will thoroughly orient the new coordinator to the job. Anyone interested may talk with Pastor Brian or call Sally at home at 304-292-3419. Thanks!!

## ST. PAUL YOUTH GROUP



Next Meeting:  
Oct. 11th 5-7 p.m.  
Brown Bag (bring your  
own dinner)

### THANKSGIVING BASKETS



Once again this year we are collecting donations for Thanksgiving baskets that will be given to Scott's Run Settlement House and Rock Forge Neighborhood House. If you would like to help with this worthwhile project watch for more information in upcoming bulletins and emails. We are asking for donations of food (for a list of food needed please see Dave or call the church office) or monetary donations. If you would like to donate money please specify that your donation be used for the Thanksgiving baskets only and place them in the offering plate.

Last year we were able to provide over 40 baskets to those in our community along with some extra food supplies for their food pantries!! We appreciate your continuing support of this outreach to families in our community that need our help during this holiday season!!!!

## THE GREEN CORNER

### “LEAVE NO CHILD INSIDE”

September 2006—The National Conservation Training Center & The Conservation Fund hosted the National Dialogue on children and nature in Shepherdstown, WV—350 people from around the country—educators, health-care experts, recreation companies, residential developers, urban planners, conservation agencies, academics—even Walt Disney reps. Most significantly, support came from both liberal and conservative religious leaders who understand that all spiritual life begins with a sense of wonder and that one of the first windows to wonder is the natural world. ‘Christians should take the lead in reconnecting with nature and disconnecting from machines’ said the President of the Southern Baptist Theological Seminary, R. Albert Mohler, Jr.

Prior to the above conference, one of the nation’s largest privately owned residential development companies (motivated by a book Last Child in the Woods (written by Richard Louve) addressed the problem of open space preservation and the interaction of home buyers and nature. The result? State and regional campaigns, called ‘Leave No Child Inside’ have formed in cities and states and the activities of various diverse groups have formed common cause and collective strength in recognizing the need for truly sustainable development because of the disconnect between children and nature. Now, developers, see the need to incorporate green space, gardens, and orchards (not gates, walls) surrounding communities.

Even wealthy communities in the Hilton Head, SC, area shelter their malls under and even behind the shelter and trees and various landscaping greenery and blossoms. Where do we see trees in our latest mall on 705?

The future of children in nature has profound implications not only for the conservation of land but also for the direction of the environmental movement. Howard Frumkin, director of the National Center for Environmental Health, says the positive health effects of nature should be conducted in collaboration with architects, urban planners, park designers, landscape architects. He says, ‘Perhaps we will advise patients to take a few days in the country to spend time gardening.’ (American Journal of Preventive Medicine, 2001)



A few weeks ago, LuAnn brought a basket of organic tomatoes which had been grown with loving care by an indigent family. They collected up to 20 plastic containers and various stake poles to support their young tomatoes and pepper plants, all surrounding their narrow gravel driveway; their privately owned plots of land promising fresh and ‘free’ summer grilling treats rewarded them indeed, with overwhelming harvest. They canned, gave away, and finally some tomatoes found their way to St. Paul Church. Their donations to unknown recipients received a monetary reward beyond their dreams—\$39. Without conscious expectations—both parties were rewarded by generosity, the bottom line of so many faiths. A ripe, organic tomato, sustaining health, and unimaginable monetary payment for a summer of stewardship—nature’s bounty.

(Stats taken from Earth Letter, Autumn 09, ‘Leave No Child Inside’)

## Prayer, Praise, and Thanksgiving

The Prayer List for St. Paul

In The Small Catechism, Martin Luther writes: The Second Commandment: You are not to misuse the name of your God. What is this? Answer: We are to fear and love God, so that we do not curse, swear, practice magic, lie, or deceive using God's name, but instead use that very name in every time of need to call on, pray to, praise, and give thanks to God.

Following this command to call on God's name in every situation, we list her intercessions to be lifted up in the midst of our congregation's worship.

**Person for whom  
we intercede:**

Leah Marie Coulter  
Melissa Counter  
Nancy Hartley  
Jerry Hartley  
Rich Thomason  
Jane Ross  
Alana Mears  
Vernon Dalton  
Betty Kelso  
Ron Fortney's Family  
Bill Grafton's Family  
Paul Harmon  
Ami Schon  
Marguerite Custer  
Mavis Iverson  
Madge Hall  
Ann Cloonon  
Sue Leezer  
Joe Shibley  
Katie Benson  
LuAnn Hartley  
Ryan Brown  
William Davis  
Aaron Sampson

**For what we are praying:**

Elevated blood sugar—in hospital  
Mother of Marie  
Fighting cellulitis & needing pacemaker  
Dizzy spells & helping wife Nancy  
Lost his leg to cancer  
Cancer & healing  
Advanced Lyme Disease  
Bell's Palsy  
Illness/Surgery  
Grieving his death  
Grieving his death  
Open heart surgery  
Comfort/personal problems  
Surgery  
Recovery/colon cancer  
Illness  
Illness  
Cancer  
Infection  
Injuries from car accident  
Severe cold  
Torticollis/medical difficulties  
Ailing health  
Deployed in Afghanistan (Army)

Names will remain on the list that for one month. At that time they will be removed and it will be necessary for you to re-enter their information in the notebook that is in the narthex. If you become aware of anyone that can be removed prior to that time, please notify the church office.

| SERVING ST. PAUL<br>October 2009             | LAY ASSISTANTS | LECTORS    | ACOLYTE-CRUCIFER                                   | USHERS                                       | NURSERY WORKERS         | COUNTERS                  |
|--|----------------|------------|--|--|-------------------------|---------------------------|
| <b>4th</b><br>10:00 AM                       | M. Haas        | S. McEwuen | E. Stiles<br>E. Stiles                             | LA Hartley<br>P. Smith<br>L & L Paulson      | J. Graham<br>S. Hollar  | C. Henry<br>J. Borrelli   |
| <b>11th</b><br>10:00 AM                      | S. Woodruff    | G. Grosso  | M. McCulla<br>AJ Bartlett                          | S. Lynch<br>K. Powell<br>B & J Schreiman     | E. Sampson              | L. Paulson<br>L. Springer |
| <b>18th</b><br>10:00 AM                      | M. Sampson     | B. Stiles  | K. Smith<br>A. Grosso                              | L. Springer<br>S. Armstrong<br>J & S McCulla | S. Rizzo                | K. Powell<br>B. Schreiman |
| <b>19th</b><br>Service of Healing<br>7:00 PM | J. Lee         | S. Leonard |  | LA Hartley                                   |                         |                           |
| <b>25th</b><br>10:00 AM                      | D. Borrelli    | G. Groce   | J. Borrelli<br>E. Graham<br>E. Stiles<br>E. Stiles | S. Bartlett<br>ML Cushing<br>E & C Melby     | A Grosso<br>M L Bennett | S. Price<br>B. Graham     |

If you are unable to serve please find your own replacement. Thank you!

# October 2009

## Monthly Planner

| Sunday  | Monday  | Tuesday  | Wednesday   | Thursday                               | Friday                            | Saturday  |   |   |   |   |   |   |   |  |   |   |   |   |   |  |   |   |   |   |    |    |    |    |    |    |    |    |    |    |    |    |    |    |    |    |    |    |    |    |    |  |  |  |   |   |   |   |   |   |   |  |   |   |   |   |   |   |   |   |   |    |    |    |    |    |    |    |    |    |    |    |    |    |    |    |    |    |    |    |    |    |  |  |  |  |
|---|---|--|---|--|-----------------------------------|---|---|---|---|---|---|---|---|--|---|---|---|---|---|--|---|---|---|---|----|----|----|----|----|----|----|----|----|----|----|----|----|----|----|----|----|----|----|----|----|--|--|--|---|---|---|---|---|---|---|--|---|---|---|---|---|---|---|---|---|----|----|----|----|----|----|----|----|----|----|----|----|----|----|----|----|----|----|----|----|----|--|--|--|--|
| <div style="display: flex; justify-content: space-around;"> <div style="border: 1px solid black; padding: 5px; text-align: left;"> <p style="margin: 0;">September</p> <table style="font-size: 8px; border-collapse: collapse;"> <tr><td>S</td><td>M</td><td>T</td><td>W</td><td>T</td><td>F</td><td>S</td></tr> <tr><td></td><td>1</td><td>2</td><td>3</td><td>4</td><td>5</td><td></td></tr> <tr><td>6</td><td>7</td><td>8</td><td>9</td><td>10</td><td>11</td><td>12</td></tr> <tr><td>13</td><td>14</td><td>15</td><td>16</td><td>17</td><td>18</td><td>19</td></tr> <tr><td>20</td><td>21</td><td>22</td><td>23</td><td>24</td><td>25</td><td>26</td></tr> <tr><td>27</td><td>28</td><td>29</td><td>30</td><td></td><td></td><td></td></tr> </table> </div> <div style="border: 1px solid black; padding: 5px; text-align: left;"> <p style="margin: 0;">November</p> <table style="font-size: 8px; border-collapse: collapse;"> <tr><td>S</td><td>M</td><td>T</td><td>W</td><td>T</td><td>F</td><td>S</td></tr> <tr><td></td><td>1</td><td>2</td><td>3</td><td>4</td><td>5</td><td>6</td></tr> <tr><td>7</td><td>8</td><td>9</td><td>10</td><td>11</td><td>12</td><td>13</td></tr> <tr><td>14</td><td>15</td><td>16</td><td>17</td><td>18</td><td>19</td><td>20</td></tr> <tr><td>21</td><td>22</td><td>23</td><td>24</td><td>25</td><td>26</td><td>27</td></tr> <tr><td>28</td><td>29</td><td>30</td><td></td><td></td><td></td><td></td></tr> </table> </div> </div> |   |  |   |  |                                   |   | S | M | T | W | T | F | S |  | 1 | 2 | 3 | 4 | 5 |  | 6 | 7 | 8 | 9 | 10 | 11 | 12 | 13 | 14 | 15 | 16 | 17 | 18 | 19 | 20 | 21 | 22 | 23 | 24 | 25 | 26 | 27 | 28 | 29 | 30 |  |  |  | S | M | T | W | T | F | S |  | 1 | 2 | 3 | 4 | 5 | 6 | 7 | 8 | 9 | 10 | 11 | 12 | 13 | 14 | 15 | 16 | 17 | 18 | 19 | 20 | 21 | 22 | 23 | 24 | 25 | 26 | 27 | 28 | 29 | 30 |  |  |  |  |
| S   | M   | T  | W   | T                                      | F                                 | S   |   |   |   |   |   |   |   |  |   |   |   |   |   |  |   |   |   |   |    |    |    |    |    |    |    |    |    |    |    |    |    |    |    |    |    |    |    |    |    |  |  |  |   |   |   |   |   |   |   |  |   |   |   |   |   |   |   |   |   |    |    |    |    |    |    |    |    |    |    |    |    |    |    |    |    |    |    |    |    |    |  |  |  |  |
|   | 1   | 2  | 3   | 4                                      | 5                                 |   |   |   |   |   |   |   |   |  |   |   |   |   |   |  |   |   |   |   |    |    |    |    |    |    |    |    |    |    |    |    |    |    |    |    |    |    |    |    |    |  |  |  |   |   |   |   |   |   |   |  |   |   |   |   |   |   |   |   |   |    |    |    |    |    |    |    |    |    |    |    |    |    |    |    |    |    |    |    |    |    |  |  |  |  |
| 6   | 7   | 8  | 9   | 10                                     | 11                                | 12  |   |   |   |   |   |   |   |  |   |   |   |   |   |  |   |   |   |   |    |    |    |    |    |    |    |    |    |    |    |    |    |    |    |    |    |    |    |    |    |  |  |  |   |   |   |   |   |   |   |  |   |   |   |   |   |   |   |   |   |    |    |    |    |    |    |    |    |    |    |    |    |    |    |    |    |    |    |    |    |    |  |  |  |  |
| 13  | 14  | 15   | 16  | 17                                     | 18                                | 19  |   |   |   |   |   |   |   |  |   |   |   |   |   |  |   |   |   |   |    |    |    |    |    |    |    |    |    |    |    |    |    |    |    |    |    |    |    |    |    |  |  |  |   |   |   |   |   |   |   |  |   |   |   |   |   |   |   |   |   |    |    |    |    |    |    |    |    |    |    |    |    |    |    |    |    |    |    |    |    |    |  |  |  |  |
| 20  | 21  | 22   | 23  | 24                                     | 25                                | 26  |   |   |   |   |   |   |   |  |   |   |   |   |   |  |   |   |   |   |    |    |    |    |    |    |    |    |    |    |    |    |    |    |    |    |    |    |    |    |    |  |  |  |   |   |   |   |   |   |   |  |   |   |   |   |   |   |   |   |   |    |    |    |    |    |    |    |    |    |    |    |    |    |    |    |    |    |    |    |    |    |  |  |  |  |
| 27  | 28  | 29   | 30  |  |                                   |   |   |   |   |   |   |   |   |  |   |   |   |   |   |  |   |   |   |   |    |    |    |    |    |    |    |    |    |    |    |    |    |    |    |    |    |    |    |    |    |  |  |  |   |   |   |   |   |   |   |  |   |   |   |   |   |   |   |   |   |    |    |    |    |    |    |    |    |    |    |    |    |    |    |    |    |    |    |    |    |    |  |  |  |  |
| S   | M   | T  | W   | T                                      | F                                 | S   |   |   |   |   |   |   |   |  |   |   |   |   |   |  |   |   |   |   |    |    |    |    |    |    |    |    |    |    |    |    |    |    |    |    |    |    |    |    |    |  |  |  |   |   |   |   |   |   |   |  |   |   |   |   |   |   |   |   |   |    |    |    |    |    |    |    |    |    |    |    |    |    |    |    |    |    |    |    |    |    |  |  |  |  |
|   | 1   | 2  | 3   | 4                                      | 5                                 | 6   |   |   |   |   |   |   |   |  |   |   |   |   |   |  |   |   |   |   |    |    |    |    |    |    |    |    |    |    |    |    |    |    |    |    |    |    |    |    |    |  |  |  |   |   |   |   |   |   |   |  |   |   |   |   |   |   |   |   |   |    |    |    |    |    |    |    |    |    |    |    |    |    |    |    |    |    |    |    |    |    |  |  |  |  |
| 7   | 8   | 9  | 10  | 11                                     | 12                                | 13  |   |   |   |   |   |   |   |  |   |   |   |   |   |  |   |   |   |   |    |    |    |    |    |    |    |    |    |    |    |    |    |    |    |    |    |    |    |    |    |  |  |  |   |   |   |   |   |   |   |  |   |   |   |   |   |   |   |   |   |    |    |    |    |    |    |    |    |    |    |    |    |    |    |    |    |    |    |    |    |    |  |  |  |  |
| 14  | 15  | 16   | 17  | 18                                     | 19                                | 20  |   |   |   |   |   |   |   |  |   |   |   |   |   |  |   |   |   |   |    |    |    |    |    |    |    |    |    |    |    |    |    |    |    |    |    |    |    |    |    |  |  |  |   |   |   |   |   |   |   |  |   |   |   |   |   |   |   |   |   |    |    |    |    |    |    |    |    |    |    |    |    |    |    |    |    |    |    |    |    |    |  |  |  |  |
| 21  | 22  | 23   | 24  | 25                                     | 26                                | 27  |   |   |   |   |   |   |   |  |   |   |   |   |   |  |   |   |   |   |    |    |    |    |    |    |    |    |    |    |    |    |    |    |    |    |    |    |    |    |    |  |  |  |   |   |   |   |   |   |   |  |   |   |   |   |   |   |   |   |   |    |    |    |    |    |    |    |    |    |    |    |    |    |    |    |    |    |    |    |    |    |  |  |  |  |
| 28  | 29  | 30   |   |  |                                   |   |   |   |   |   |   |   |   |  |   |   |   |   |   |  |   |   |   |   |    |    |    |    |    |    |    |    |    |    |    |    |    |    |    |    |    |    |    |    |    |  |  |  |   |   |   |   |   |   |   |  |   |   |   |   |   |   |   |   |   |    |    |    |    |    |    |    |    |    |    |    |    |    |    |    |    |    |    |    |    |    |  |  |  |  |
| <b>4</b><br>10:00 AM Service<br>4:00 PM Blessing of the<br>Animals  | <b>5</b>  | <b>6</b><br>10:00 AM Bible Study<br>7:00 PM Bible Study  | <b>7</b><br>7:00 PM Choir rehearsal                   | <b>8</b><br>7:00 PM Council<br>Meeting | <b>9</b><br>10:00 AM Piecemakers  | <b>10</b>   |   |   |   |   |   |   |   |  |   |   |   |   |   |  |   |   |   |   |    |    |    |    |    |    |    |    |    |    |    |    |    |    |    |    |    |    |    |    |    |  |  |  |   |   |   |   |   |   |   |  |   |   |   |   |   |   |   |   |   |    |    |    |    |    |    |    |    |    |    |    |    |    |    |    |    |    |    |    |    |    |  |  |  |  |
| <b>11</b><br>10:00 AM Service   | <b>12</b>   | <b>13</b>  | <b>14</b><br>2:00 PM WELCA<br>7:00 PM Choir rehearsal | <b>15</b>                              | <b>16</b><br>10:00 AM Piecemakers | <b>17</b><br>10:00 AM Sunday School<br>Teachers Meeting |   |   |   |   |   |   |   |  |   |   |   |   |   |  |   |   |   |   |    |    |    |    |    |    |    |    |    |    |    |    |    |    |    |    |    |    |    |    |    |  |  |  |   |   |   |   |   |   |   |  |   |   |   |   |   |   |   |   |   |    |    |    |    |    |    |    |    |    |    |    |    |    |    |    |    |    |    |    |    |    |  |  |  |  |
| <b>18</b><br>9:00 AM Sunday School<br>10:00 AM Service  | <b>19</b><br>7:00 PM Service of<br>Word & Healing | <b>20</b><br>10:00 AM Bible Study<br>7:00 PM Bible Study | <b>21</b><br>7:00 PM Choir rehearsal                  | <b>22</b>                              | <b>23</b><br>10:00 AM Piecemakers | <b>24</b><br>Circle of Friends                          |   |   |   |   |   |   |   |  |   |   |   |   |   |  |   |   |   |   |    |    |    |    |    |    |    |    |    |    |    |    |    |    |    |    |    |    |    |    |    |  |  |  |   |   |   |   |   |   |   |  |   |   |   |   |   |   |   |   |   |    |    |    |    |    |    |    |    |    |    |    |    |    |    |    |    |    |    |    |    |    |  |  |  |  |
| <b>25</b><br>9:00 AM Sunday School<br>10:00 AM Service<br>Circle of Friends   | <b>26</b><br>8:00 AM LMM<br>(Shoney's)            | <b>27</b><br>10:00 AM Bible Study<br>7:00 PM Bible Study | <b>28</b><br>7:00 PM Choir rehearsal                  | <b>29</b>                              | <b>30</b><br>10:00 AM Piecemakers | <b>31</b><br>10:00 AM Bishop Lay<br>Leader Training     |   |   |   |   |   |   |   |  |   |   |   |   |   |  |   |   |   |   |    |    |    |    |    |    |    |    |    |    |    |    |    |    |    |    |    |    |    |    |    |  |  |  |   |   |   |   |   |   |   |  |   |   |   |   |   |   |   |   |   |    |    |    |    |    |    |    |    |    |    |    |    |    |    |    |    |    |    |    |    |    |  |  |  |  |

ST PAUL LUTHERAN  
CHURCH

309 Baldwin St  
Morgantown WV 26505



NON-PROFIT ORGANIZATION  
U.S. POSTAGE  
**PAID**  
MORGANTOWN, WV 26505  
**PERMIT NO. 396**

«AddressBlock»

The **Epistle** is a publication from:  
St. Paul Lutheran Church, Morgantown, WV  
Office Hours: Monday-Thursday 9:00–2:00  
Friday 9:00–12:00  
Telephone: (304)599-0620

**Officers Of The Congregation**

President: Larry Springer  
Vice President: Bill Graham  
Secretary: Tamara Riegel  
Treasurer: Dave Stiles  
Financial Secretary: Sandy Price

**Council Members**

|               |                |                 |
|---------------|----------------|-----------------|
| Bill Graham   | Larry Springer | Connie Toffle   |
| Robert Zay    | Steve Gabbert  | Bruce Schreiman |
| Tamara Riegel | Lu Ann Hartley | Misti Bartlett  |
|               | John Borrelli  |                 |